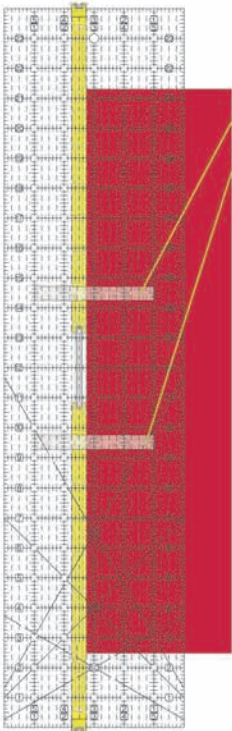




# Guide Lock Strips

Lock the 24" Fabric Guide, included in the Quilt Ruler Upgrade Kit, in place.



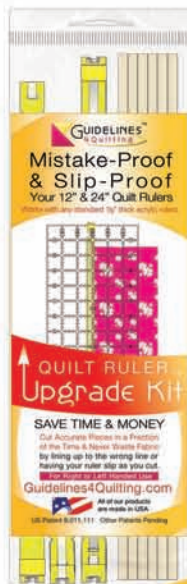
Attach two 5" x 1/2" Strips included in this package underneath your 24" ruler, and the 24" Fabric Guide will stay perfectly aligned.

The Quilt Ruler Upgrade Kit includes two Fabric Guides, one for your 12" & one for your 24" ruler.

You will not need Guide Lock Strips on your 12" ruler because the short Guide stays aligned without them.

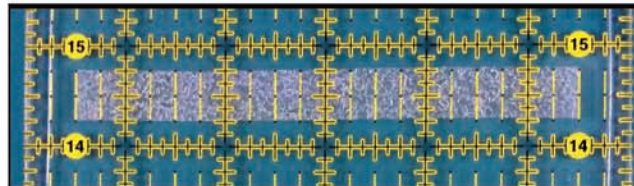
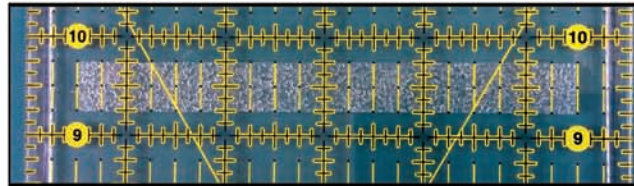
The Strips ensure that the 24" Fabric Guide stays perfectly lined up as you slide up to the fabric's edge from a single piece to multiple layers.

Two Strips are included in the Quilt Ruler Upgrade Kit. They are also available separately if you have more than one 24" ruler that you want to use the 24" Fabric Guide on.



## Peel & Stick the Guide Lock Strips Underneath Your 24" Ruler.

Peel them off of the backing paper to expose the adhesive. Attach one between the 9" & 10" lines and the other between the 14" & 15" lines on the bottom of your ruler.



The Guide Lock Strips are 5" x 1/2".

To center them on a ruler, start:

- 1/2" from either edge on a 6" wide ruler.
- 3/4" from the side on a 6 1/2" wide ruler.

For 8" or wider rulers, get more Strips and cut to fit, so they are 1/2" from either edge.

To learn more about the Quilt Ruler Upgrade Kit or other cool tools by Guidelines4Quilting,

visit: [www.GL4Q.com](http://www.GL4Q.com)

Item# QR-GLS

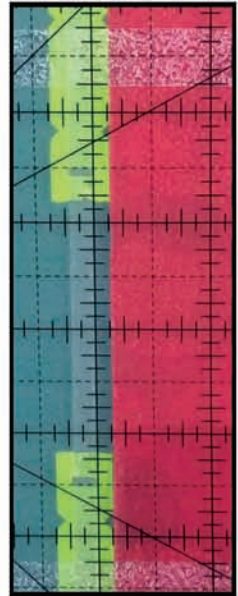


Made in the USA



## Finally, Check the Accuracy:

To make sure you've got the Fabric Guide aligned perfectly, you can check the accuracy of the fabric alignment in the gap between the Guides. Once set, the Guide Lock Strips will make sure that the Fabric Guide lines the fabric up accurately every time.



## Your Upgraded Ruler will last longer.

With Grip Strips on the edges underneath your ruler, you'll never wear the lines and numbers off no matter how much you use it.

Because you will be sliding the hooks on the ends of the Fabric Guides, you can put a strip of tape right along both edges underneath your rulers to keep the markings from wearing off there as well.

